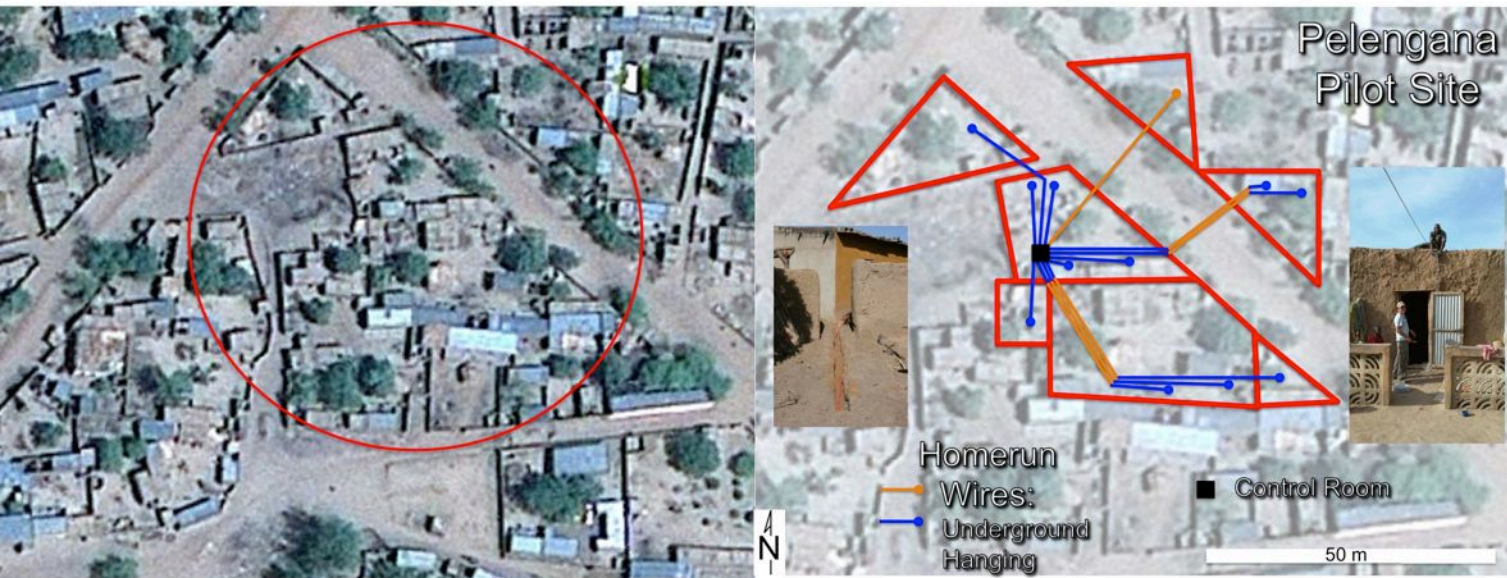


SharedSolar

MVP Tibby (Mali)

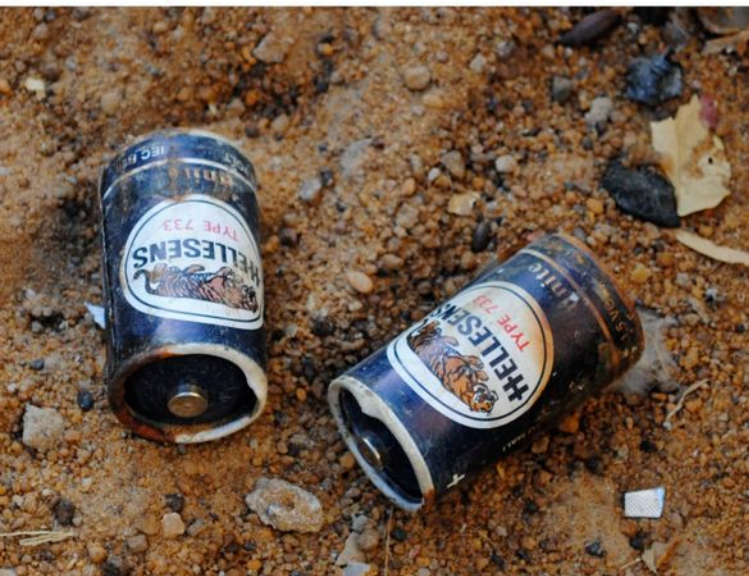
December 2010



Plan of pilot site



Millennium Village Project (Tiby) Segou



Dry cell batteries, Kerosene and Car batteries are the main source of power for lighting



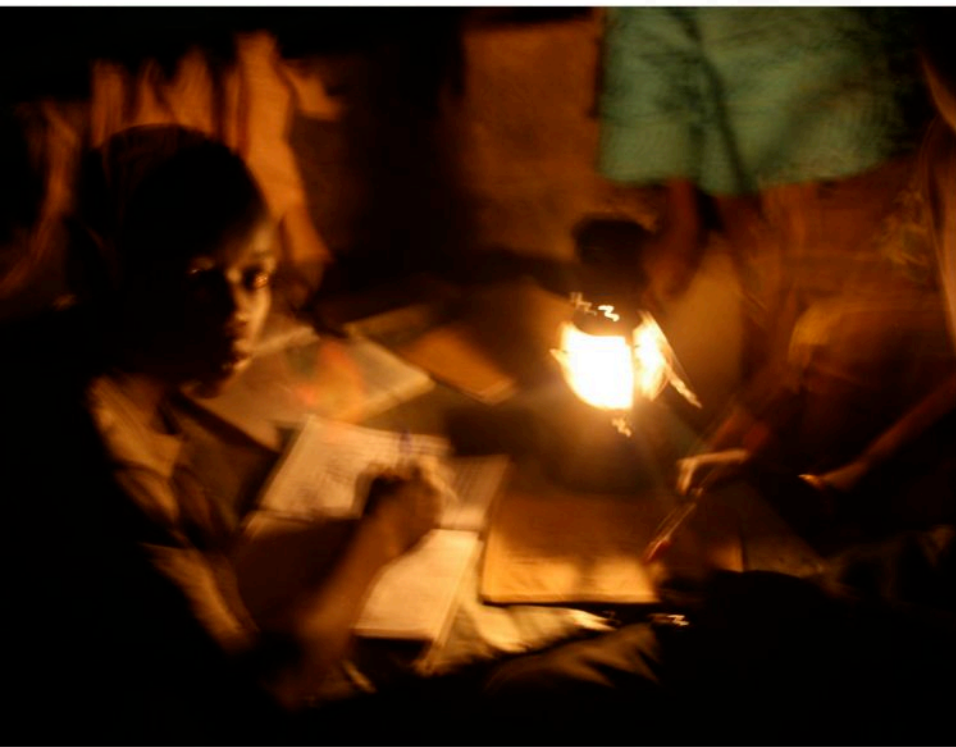


Wiring installation and CFL lighting of households





Difference in lighting between kerosene lamps and CFLs powered by SharedSolar







Meter and communication box (previous page), electrical protection and PCU (above) and batteries bank (above right)



Training of users to credit and manage their account through mobile phone and 'scratch cards'



• Pour connaître votre code d'urgence, contactez votre
service client ou consultez le site de votre fournisseur.
• Pour connaître votre code d'urgence, contactez votre
service client ou consultez le site de votre fournisseur.
• Pour connaître votre code d'urgence, contactez votre
service client ou consultez le site de votre fournisseur.



Customers enjoying the SharedSolar service



Blackboard showing the weekly consumption during introduction training